

## NogaLogic for Information Governance

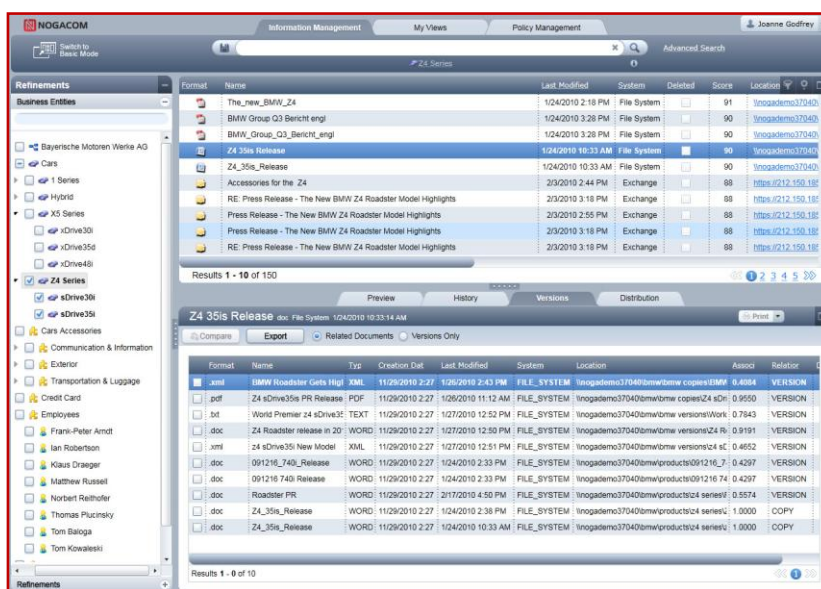
NogaLogic is a powerful solution for information governance. It gives you the critical information you need to quickly, easily, accurately and cost-effectively identify and analyze your unstructured data, to assess risks and comply with information governance regulations.

### Unparalleled Visibility into your Unstructured Business Data Throughout its Lifecycle

NogaLogic automatically identifies your data – including documents containing sensitive information – by its business context. It then shows you where these documents are located, by whom they are being accessed, and how they are used and distributed across your organization. Using NogaLogic's policy management you can then take action on this data, such as tag it, move or copy it, to comply with information governance requirements.

### Classify and Organize Your Unstructured Data Based on its Business Value

NogaLogic is powered by a unique data classification engine which automatically classifies each document based on your organization's specific 'business entities' – such as your customers, products, partners, technologies, territories, lines of business etc. Through this process your unstructured data can now be identified, understood, managed and protected based on its actual business meaning and value to your organization.



Format	Name	Last Modified	System	Deleted	Scores	Location
	The_new_BMW_Z4	1/24/2010 2:18 PM	File System		91	Inogademo37040
	BMW_Group_Q3_Bericht_engl	1/24/2010 3:28 PM	File System		90	Inogademo37040
	BMW_Group_Q3_Bericht_engl	1/24/2010 3:28 PM	File System		90	Inogademo37040
	Z4_35is_Release	1/24/2010 10:33 AM	File System		90	Inogademo37040
	Z4_35is_Release	1/24/2010 10:33 AM	File System		90	Inogademo37040
	Accessories for the Z4	2/3/2010 2:44 PM	Exchange		88	https://121.150.191
	RE: Press Release - The New BMW Z4 Roadster Model Highlights	2/3/2010 3:18 PM	Exchange		88	https://121.150.191
	Press Release - The New BMW Z4 Roadster Model Highlights	2/3/2010 3:18 PM	Exchange		88	https://121.150.191
	RE: Press Release - The New BMW Z4 Roadster Model Highlights	2/3/2010 3:18 PM	Exchange		88	https://121.150.191

Format	Name	Typ	Creation Dat	Last Modified	System	Location	Assoc	Relator
.xml	BMW Roadster Gets High	XML	11/29/2010 2:27	1/26/2010 2:43 PM	FILE_SYSTEM	Inogademo37040\bmw\bmw_copies\BMW	0.4994	VERSION
.pdf	Z4 sDrive35i PR Release	PDF	11/29/2010 2:27	1/26/2010 11:12 AM	FILE_SYSTEM	Inogademo37040\bmw\bmw_copies\Z4 sDr	0.9550	VERSION
.txt	World Premier Z4 sDrive35i	TEXT	11/29/2010 2:27	1/27/2010 12:52 PM	FILE_SYSTEM	Inogademo37040\bmw\bmw_versions\Work	0.7843	VERSION
.doc	Z4 Roadster Release in 20	WORD	11/29/2010 2:27	1/27/2010 12:30 PM	FILE_SYSTEM	Inogademo37040\bmw\bmw_versions\Z4 R	0.9191	VERSION
.doc	Z4 sDrive35i New Model	WORD	11/29/2010 2:27	1/27/2010 12:51 PM	FILE_SYSTEM	Inogademo37040\bmw\bmw_versions\Z4 s	0.4652	VERSION
.doc	091216_740_Release	WORD	11/29/2010 2:27	1/24/2010 2:33 PM	FILE_SYSTEM	Inogademo37040\bmw\products\091216_7	0.4297	VERSION
.doc	091216_740_Release	WORD	11/29/2010 2:27	1/24/2010 2:33 PM	FILE_SYSTEM	Inogademo37040\bmw\products\091216_7	0.4297	VERSION
.doc	Roadster PR	WORD	11/29/2010 2:27	2/17/2010 4:50 PM	FILE_SYSTEM	Inogademo37040\bmw\products\Z4 series\	0.5574	VERSION
.doc	Z4_35is_Release	WORD	11/29/2010 2:27	1/24/2010 2:38 PM	FILE_SYSTEM	Inogademo37040\bmw\products\Z4 series\	1.0000	COPY
.doc	Z4_35is_Release	WORD	11/29/2010 2:27	1/24/2010 10:33 AM	FILE_SYSTEM	Inogademo37040\bmw\products\Z4 series\	1.0000	COPY

### A Powerful Solution for a Wide Range of Information Governance Challenges

Using NogaLogic's insight you can now effectively address a wide variety of internal information governance initiatives and external regulatory requirements such as PCI DSS compliance, Cloud Computing, eDiscovery, data migration and archiving, Electronic Data Records Management, and much more.

#### Key Benefits of NogaLogic

- Know exactly what business data you have, where it is, how it's used, accessed and distributed
- Save time, save money, save resources
- Transform your fragmented business data, scattered across the organization, into a single, simple, well structured virtual repository that's organized based on the structure of your organization
- Get a full data lifecycle analysis and correlate the data to end user behavior
- Understand the current state and risk of your unstructured data through detailed reports
- Expose the informal/improper business processes that created your current data environment
- Get the necessary insights to define and implement the right policies and practices for your organization
- Quick and easy installation, no manual tagging or changes to existing business practices

## Identify all Copies and Versions of Documents

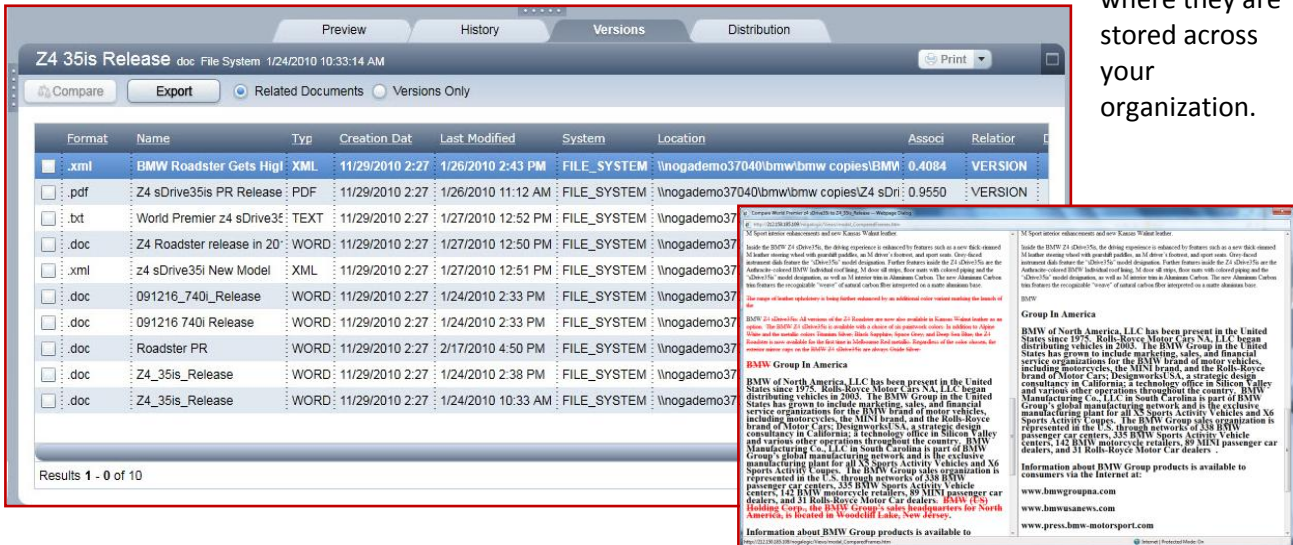
Users quickly generate multiple copies and versions of business documents. These copies and versions wind up all across the organization. They may be stored in the same location as the original under a different filename—or in another location under either the same filename or a different one. For example, a user may copy a PDF file from a secure server and keep it in a personal file on his or her local fileserver for easier retrieval in the future.

Discovering all copies and versions of a document is important for several reasons:

- Copies, versions and related documents of original files containing sensitive content may not have the same permissions as the original files
- Unauthorized or improperly managed versions of files may result in users working with inaccurate or out-of-date information
- The proliferation of copies and versions may result in non-compliance with regulatory and corporate mandates
- Waste of storage infrastructure, and waste of management of unnecessary files
- A better understanding of how certain types of information are being legitimately copied or changed can help define effective business processes and policies

NogaLogic automatically finds all copies, versions and related documents of every document in your data environment—regardless of file name, format or location. It even highlights all the differences between versions and identifies changes. This feature enables you to easily track the lifecycle of any document, quickly detect information risks, and better understand exactly how information assets are being used and

where they are stored across your organization.



The screenshot displays the NogaLogic interface for document version management. The top navigation bar includes 'Preview', 'History', 'Versions', and 'Distribution'. The main window shows a list of document versions for 'Z4 35is Release.doc'. The table below summarizes the visible data:

Format	Name	Typ	Creation Dat	Last Modified	System	Location	Assoc	Relator
.xml	BMW Roadster Gets High	XML	11/29/2010 2:27	1/26/2010 2:43 PM	FILE_SYSTEM	\nogademo37040\bmw\bmw copies\BMW_0.4084	0.4084	VERSION
.pdf	Z4 sDrive35is PR Release	PDF	11/29/2010 2:27	1/26/2010 11:12 AM	FILE_SYSTEM	\nogademo37040\bmw\bmw copies\Z4 sDr	0.9550	VERSION
.bt	World Premier Z4 sDrive35	TEXT	11/29/2010 2:27	1/27/2010 12:52 PM	FILE_SYSTEM	\nogademo37		
.doc	Z4 Roadster release in 20	WORD	11/29/2010 2:27	1/27/2010 12:50 PM	FILE_SYSTEM	\nogademo37		
.xml	Z4 sDrive35i New Model	XML	11/29/2010 2:27	1/27/2010 12:51 PM	FILE_SYSTEM	\nogademo37		
.doc	091216_740i_Release	WORD	11/29/2010 2:27	1/24/2010 2:33 PM	FILE_SYSTEM	\nogademo37		
.doc	091216_740i_Release	WORD	11/29/2010 2:27	1/24/2010 2:33 PM	FILE_SYSTEM	\nogademo37		
.doc	Roadster PR	WORD	11/29/2010 2:27	2/17/2010 4:50 PM	FILE_SYSTEM	\nogademo37		
.doc	Z4_35is_Release	WORD	11/29/2010 2:27	1/24/2010 2:38 PM	FILE_SYSTEM	\nogademo37		
.doc	Z4_35is_Release	WORD	11/29/2010 2:27	1/24/2010 10:33 AM	FILE_SYSTEM	\nogademo37		

Below the table, a preview window shows the content of a selected document, including text about BMW's global manufacturing network and a section titled 'BMW Group in America'.

Key benefits of NogaLogic's version identification include:

- Automatically identifies all copies, versions and related documents - regardless of file name, format or location
- Shows how close a version is to its master document through an 'association rate' percentage
- Can compare versions and highlight the differences between them
- Provides a full audit history on all copies and versions, as well as distribution tracking information
- Identifies access rights to all copies and versions
- Automatically copy/move copies and versions—on a one-time or on-going basis
- Can be applied automatically to all new or updated documents
- Is fully automated, and an integral component of the data classification process, and does not require any user involvement or decision-making

## Create and Manage Policies Based on the Business Context of Documents

One of the main goals for security officers and information managers is to define policies that will manage and protect their unstructured data effectively. However, one of the main challenges for effective policy management is being able to accurately identify the right data to manage. NogaLogic addresses these problems and makes policy-based information management quick, simple and effective.

NogaLogic's policy management enables you to centrally move, copy, tag or share content automatically – through a single UI. Creating policies with NogaLogic is very easy. With a couple of clicks you select the content you want to target—based on its business context and/or any combination of attributes such as file format, storage location, or any other property or criteria. Policies can be as granular and complex or as broad and simple as you need them to be, and they can be easily modified.

Next you select the actions you want to take on this data—copy, move, tag or share. And finally, you schedule the policy to run. NogaLogic's policies can be run one time only or saved as scheduled tasks. Furthermore, policies can be automatically applied to any new or updated business data as soon as it is created—wherever it is stored, whatever format it's in, and whatever filename it is given.

Once the policy is set to run, NogaLogic will automatically seek out all targeted content across your environment and apply all appropriate policies to it.

The screenshot displays the NogaLogic Policy Management interface. At the top, there are tabs for 'Information Management', 'My Views', and 'Policy Management'. Below the tabs is a navigation bar with buttons for 'Create New', 'Edit Policy', 'Delete Policy', and 'Save Policy'. The main area features a table with columns: Policy Name, Description, Owner, Last Modified, Enabled, and Last Run Date. The table lists several policies, including 'Tag documents', 'Version management', 'Move documents', and 'Management notification'. Two dialog boxes are overlaid on the interface. The 'Create Action Tag Documents' dialog shows fields for Name ('Tag customer contracts'), Description ('Top secret classification'), and a list of actions to tag documents. The 'Create Action Manage Versions' dialog shows fields for Name, Description, Version Match Type, Master Version Selection, File Actions, and File Location Settings.

Using NogaLogic's policy management you can:

- **Automatically copy or move any unstructured data.** This gives you an easy, accurate and efficient way to migrate data, consolidate data, and clean up data repositories. For example you can create a policy that automatically migrates all documents related to your company's top customers to a secure data repository.
- **Automatically manage versions, copies and related documents.** For example, you can create a policy that moves all unnecessary copies and versions of documents to a low end storage drive to save space as well as infrastructure costs and management resources.
- **Automatically tag desired documents with new properties.** For example you can tag documents containing sensitive business information (selected based on their business context), as "confidential" and then move them to a secure repository.

## NogaLogic Key Features

NogaLogic combines a wide range of key features and functionality that enable you to fully and effectively manage your unstructured business data and address Information Governance business challenges:

### Automatically identifies and classifies all documents by their business context and value:

- Identifies, copies and versions of documents regardless of location format or file name.
- Identifies sensitive data:
  - Documents containing sensitive content related to the business
  - Credit card numbers, regular expressions, pattern matching and PII data
  - Pre-defined templates that identify data deemed sensitive by regulations
  - Documents tagged with various sensitive classifications such as “top secret”, “confidential” etc.
  - Information needed for eDiscovery
  - Certain business records which companies are required to retain
  - Sensitive information contained in meta data/properties tags

### Correlates relevant documents - from across all data repositories - into a single UI:

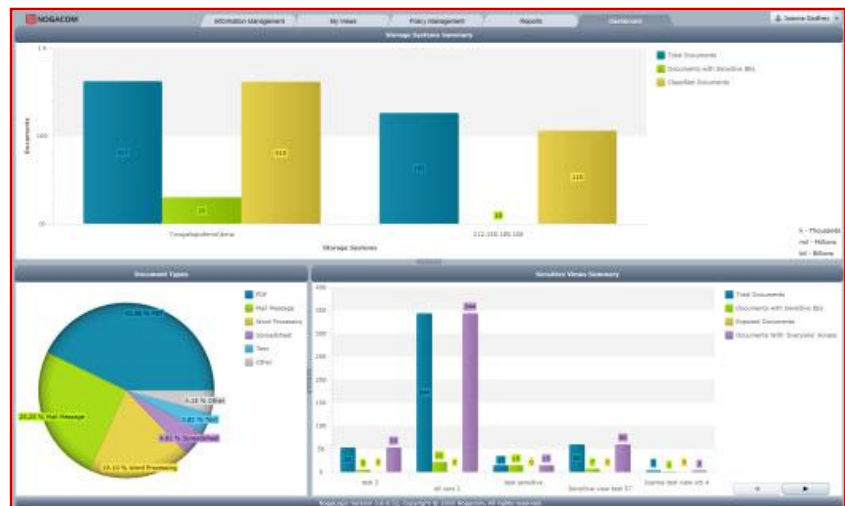
- Enables further filter data using keywords, file formats, dates, storage locations, and any other file property.
- Create ‘Views’ which define and organize a group of documents based on selected business entities and file property filters. Saved Views can be used in policies and reports.

### Data lifecycle analysis which correlates the data to end user behavior:

- Tracks the email distribution of all documents and shows you to whom each document was emailed - inside and outside the company.
- Provides an audit history on all documents and shows who made changes, when these changes were made, where each new version of a document was stored and other actions performed on a file.
- Identifies the storage location of every document.

### Analyze the current state and risk of unstructured data through reports and dashboard:

- Delivers detailed reports which provide intuitive analysis of data ownership, copies/versions, storage, access rights, distribution trends and anomalies, PCI DSS Compliance, and much more. Reports can be tailored specifically for sensitive data.
- Provides a dashboard which shows the current status of sensitive data across the organization and enables users to easily identify sensitive data which is at risk.



### Flexible and easy-to-use policy management:

- Move/copy documents, tag documents, and/or alert on changes to data, selected based on the business context and sensitivity of the document.

### Flexible and easy-to-use enterprise-scale solution:

- Perform data analysis, policy simulations, reporting and forensic research while offline
- Central administration and configuration through an easy-to-use GUI
- Enterprise scalability and easily connects to applications, databases and file systems across the enterprise. Supports more than 300 file formats.
- Classifies and indexes nine languages and indexes 24 additional languages.